

Texas Instruments

DESIGNER:  
Brian Ashelin  
(507) 536-2901

TITLE:

CC1101 Rx 900Mhz



ENGINEER:  
Mike Burns  
(507) 536-2902

PART NO.: CC1101 Rx 900Mhz

REV: B

DATE: 8-Jan-2008

FILE NAME: CC1101 Rx.PCB

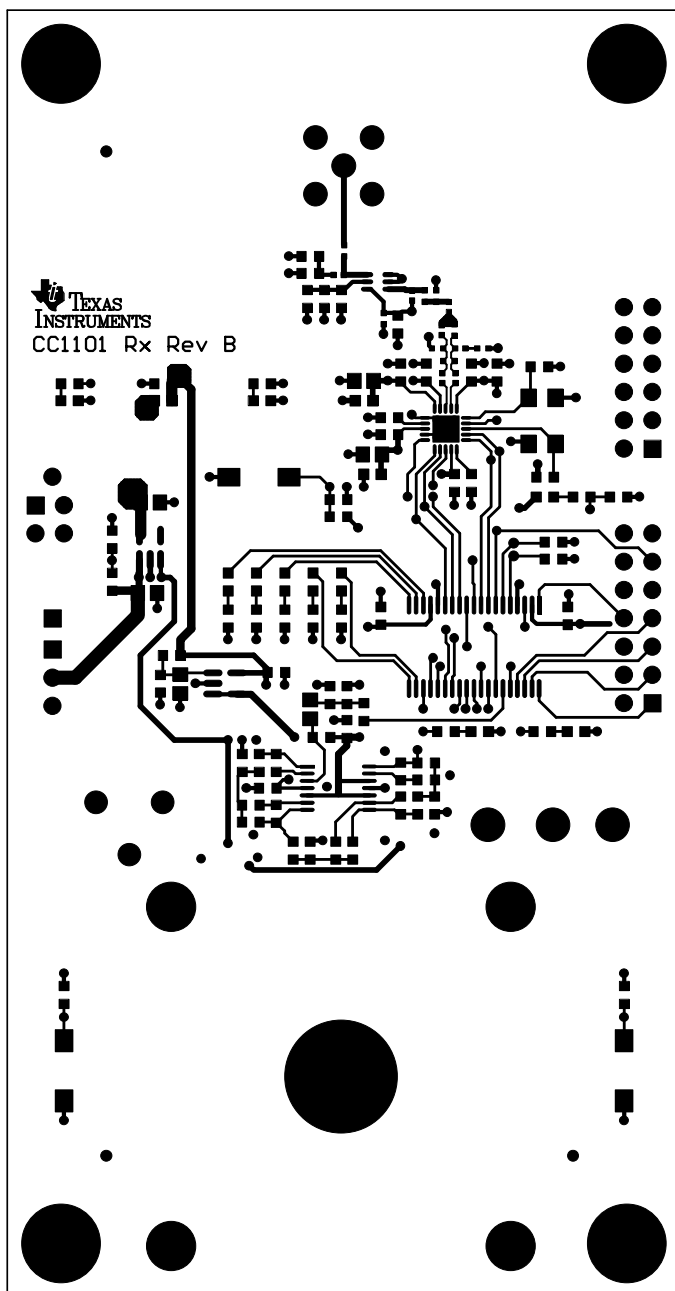
LAYER: Mechanical5

GERBER:

GERBER: .GTO







Texas Instruments

DESIGNER:  
Brian Ashelin  
(507) 536-2901

TITLE:

CC1101 Rx 900Mhz



ENGINEER:  
Mike Burns  
(507) 536-2902

PART NO.: CC1101 Rx 900Mhz

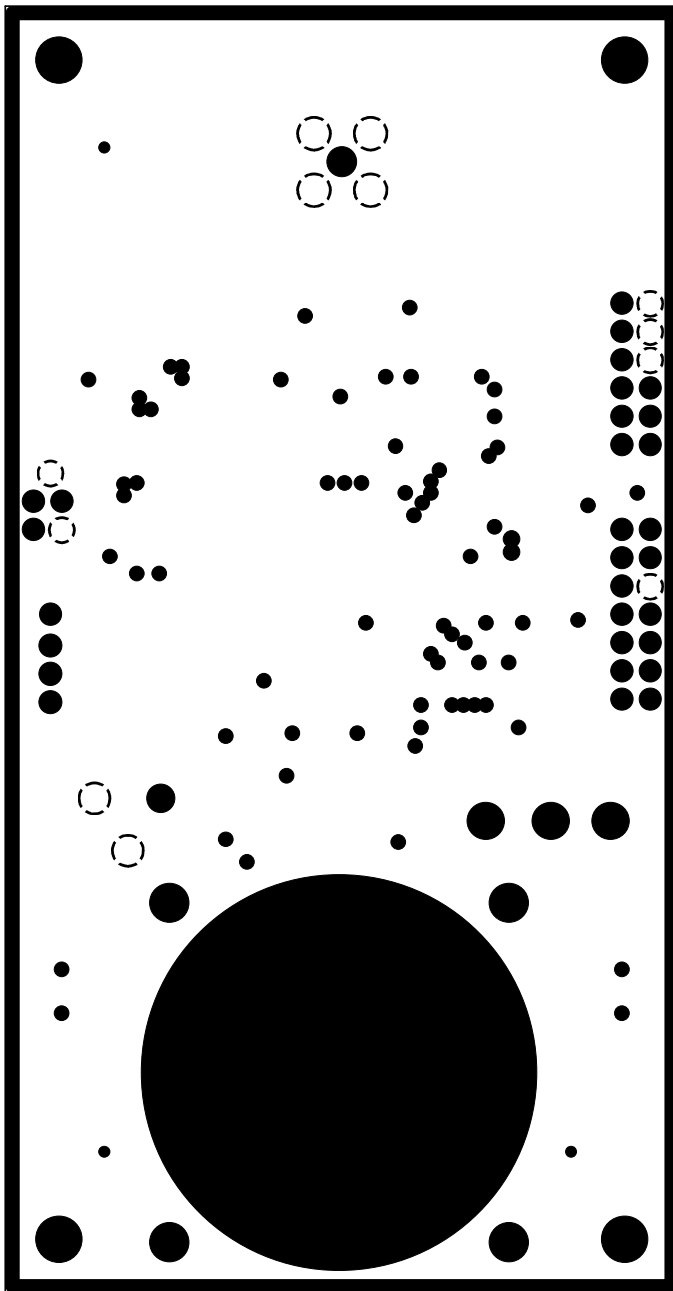
REV: B

DATE: 8-Jan-2008

FILE NAME: CC1101 Rx.PCB

LAYER: TopLayer

GERBER:



Texas Instruments

DESIGNER:  
Brian Ashelin  
(507) 536-2901

TITLE:

CC1101 Rx 900Mhz



ENGINEER:  
Mike Burns  
(507) 536-2902

PART NO.: CC1101 Rx 900Mhz

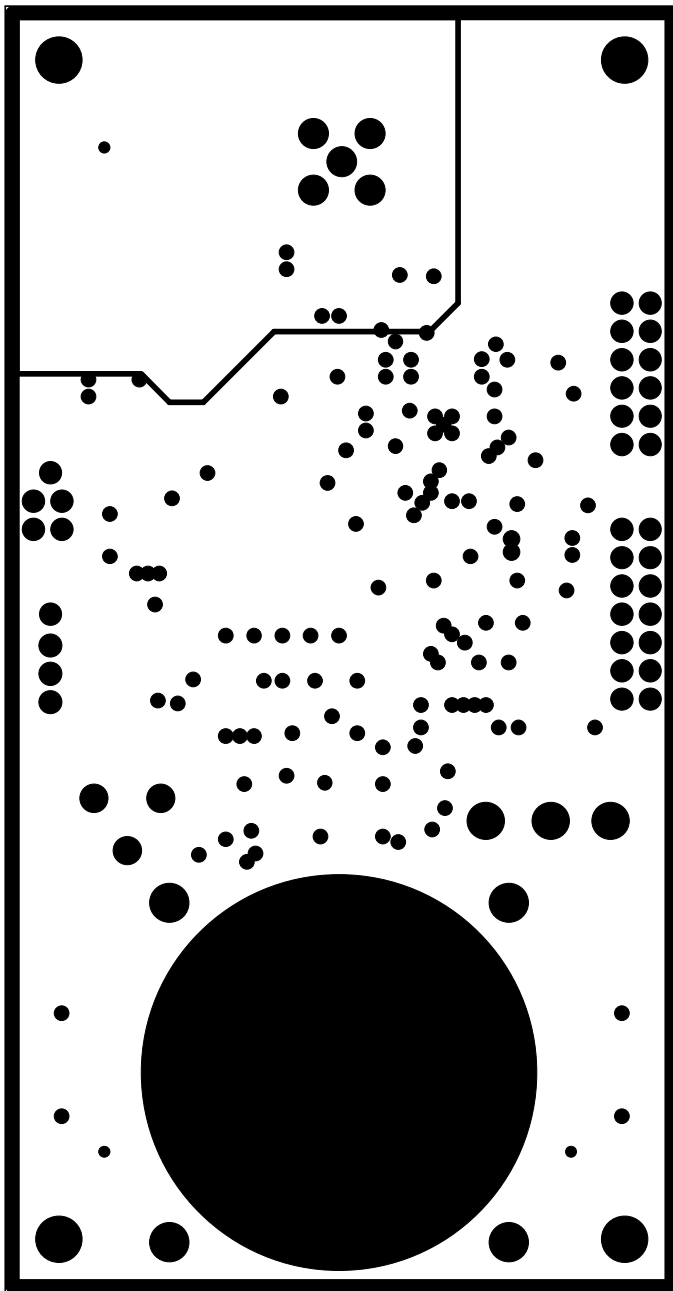
REV: B

DATE: 8-Jan-2008

FILE NAME: CC1101 Rx.PCB

LAYER: InternalPlane1

GERBER: .GP1



Texas Instruments

DESIGNER:  
Brian Ashelin  
(507) 536-2901

TITLE:

CC1101 Rx 900Mhz



ENGINEER:  
Mike Burns  
(507) 536-2902

PART NO.: CC1101 Rx 900Mhz

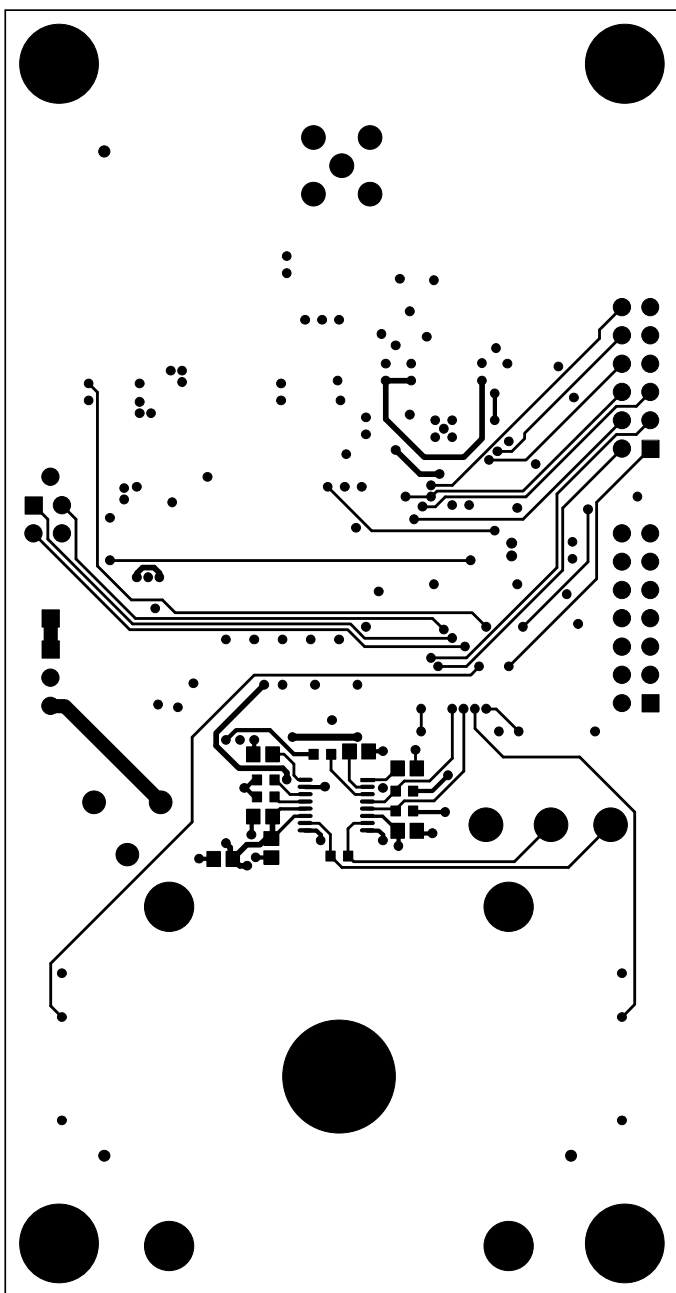
REV: B

DATE: 8-Jan-2008

FILE NAME: CC1101 Rx.PCB

LAYER: InternalPlane2

GERBER: .GP2



Texas Instruments

DESIGNER:  
Brian Ashelin  
(507) 536-2901

TITLE:

CC1101 Rx 900Mhz



ENGINEER:  
Mike Burns  
(507) 536-2902

PART NO.: CC1101 Rx 900Mhz

REV: B

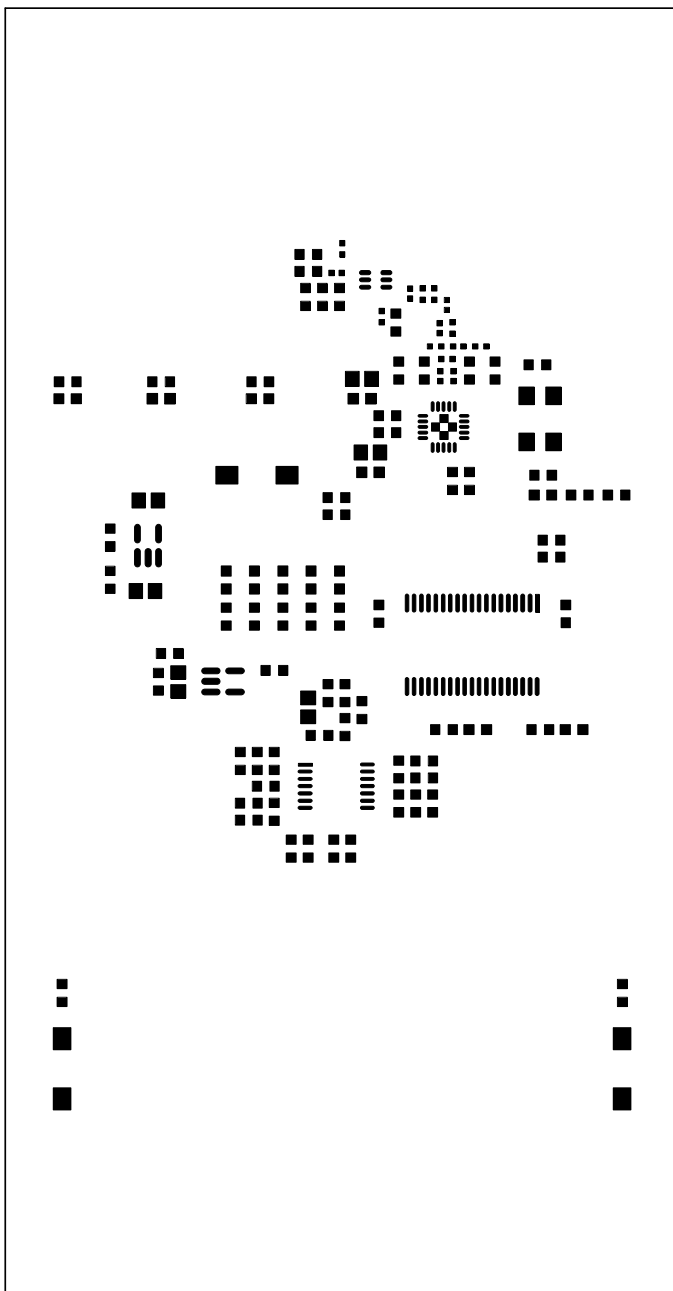
DATE: 8-Jan-2008

FILE NAME: CC1101 Rx.PCB

LAYER: BottomLayer

GERBER:





Texas Instruments

DESIGNER:  
Brian Ashelin  
(507) 536-2901

TITLE:

CC1101 Rx 900Mhz



ENGINEER:  
Mike Burns  
(507) 536-2902

PART NO.: CC1101 Rx 900Mhz

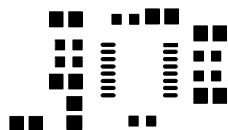
REV: B

DATE: 8-Jan-2008

FILE NAME: CC1101 Rx.PCB

LAYER: Top Paste

GERBER: .GTP



Texas Instruments

DESIGNER:  
Brian Ashelin  
(507) 536-2901

TITLE:

CC1101 Rx 900Mhz



ENGINEER:  
Mike Burns  
(507) 536-2902

PART NO.: CC1101 Rx 900Mhz

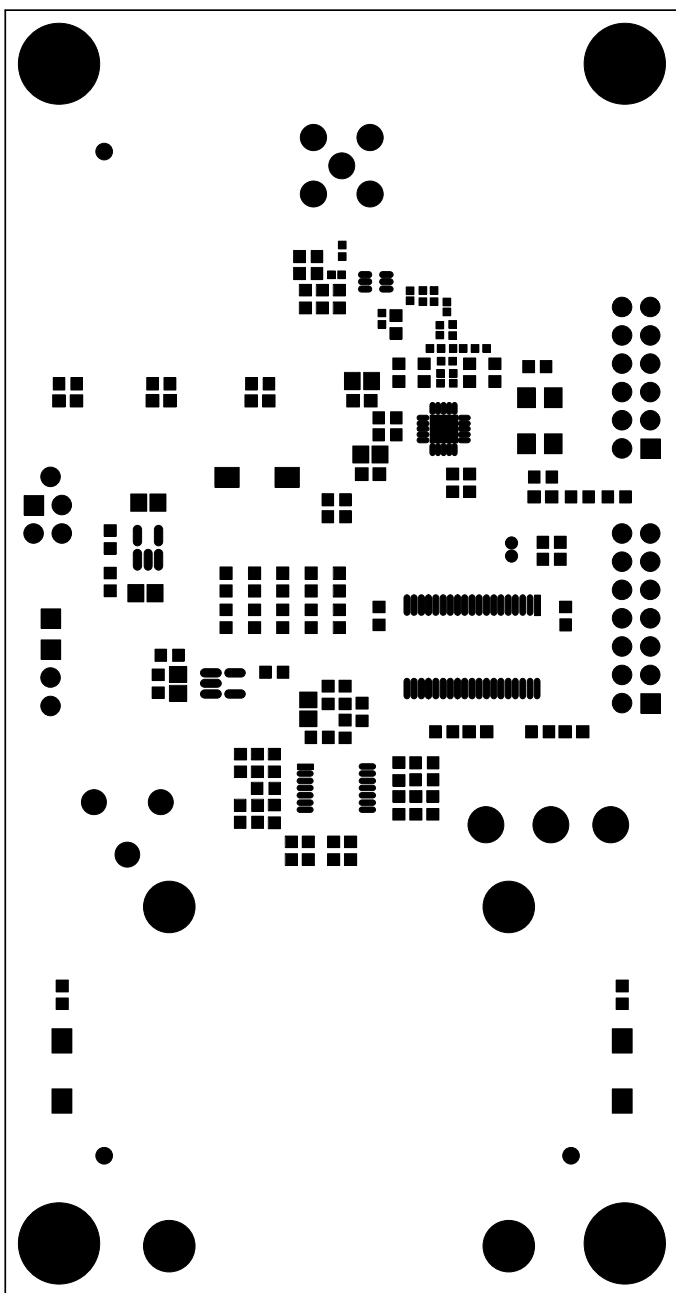
REV: B

DATE: 8-Jan-2008

FILE NAME: CC1101 Rx.PCB

LAYER: Bottom Paste

GERBER: .GBP



Texas Instruments

DESIGNER:  
Brian Ashelin  
(507) 536-2901

TITLE:  
CC1101 Rx 900Mhz



ENGINEER:  
Mike Burns  
(507) 536-2902

PART NO.: CC1101 Rx 900Mhz

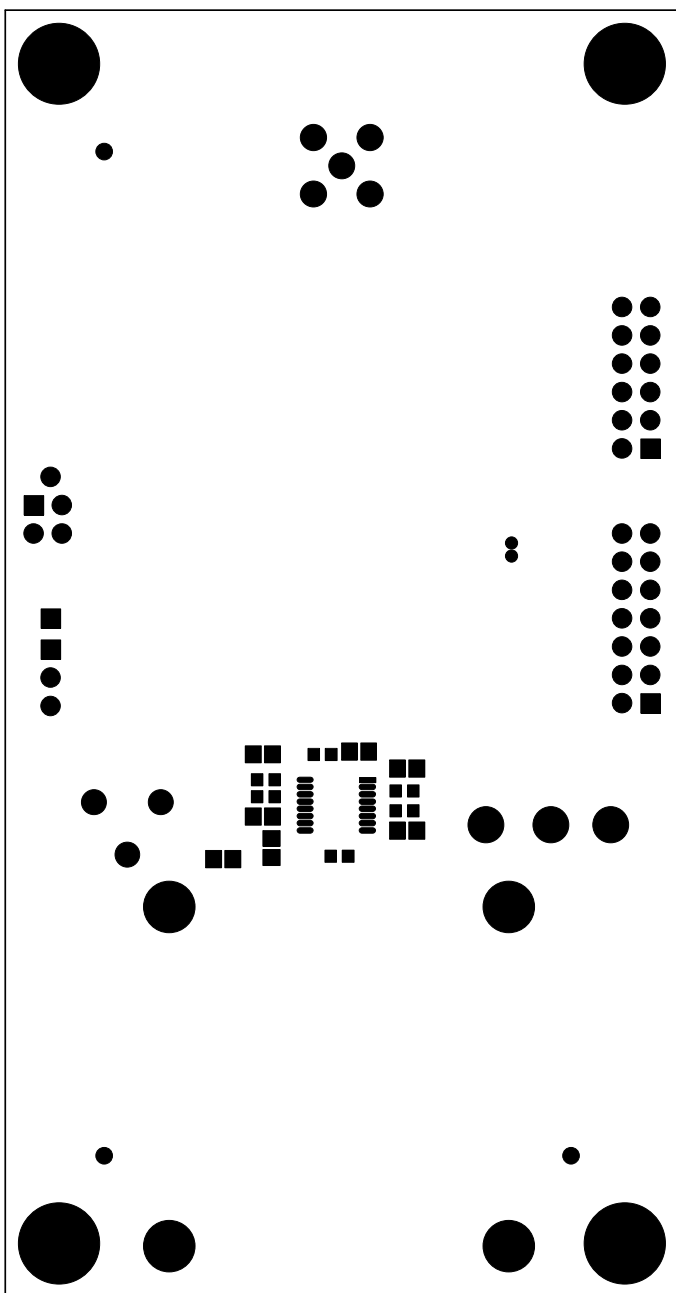
REV: B

DATE: 8-Jan-2008

FILE NAME: CC1101 Rx.PCB

LAYER: Top Solder Mask

GERBER: .GTS



Texas Instruments

DESIGNER:  
Brian Ashelin  
(507) 536-2901

TITLE:

CC1101 Rx 900Mhz

 **TEXAS**  
INSTRUMENTS

ENGINEER:  
Mike Burns  
(507) 536-2902

PART NO.: CC1101 Rx 900Mhz

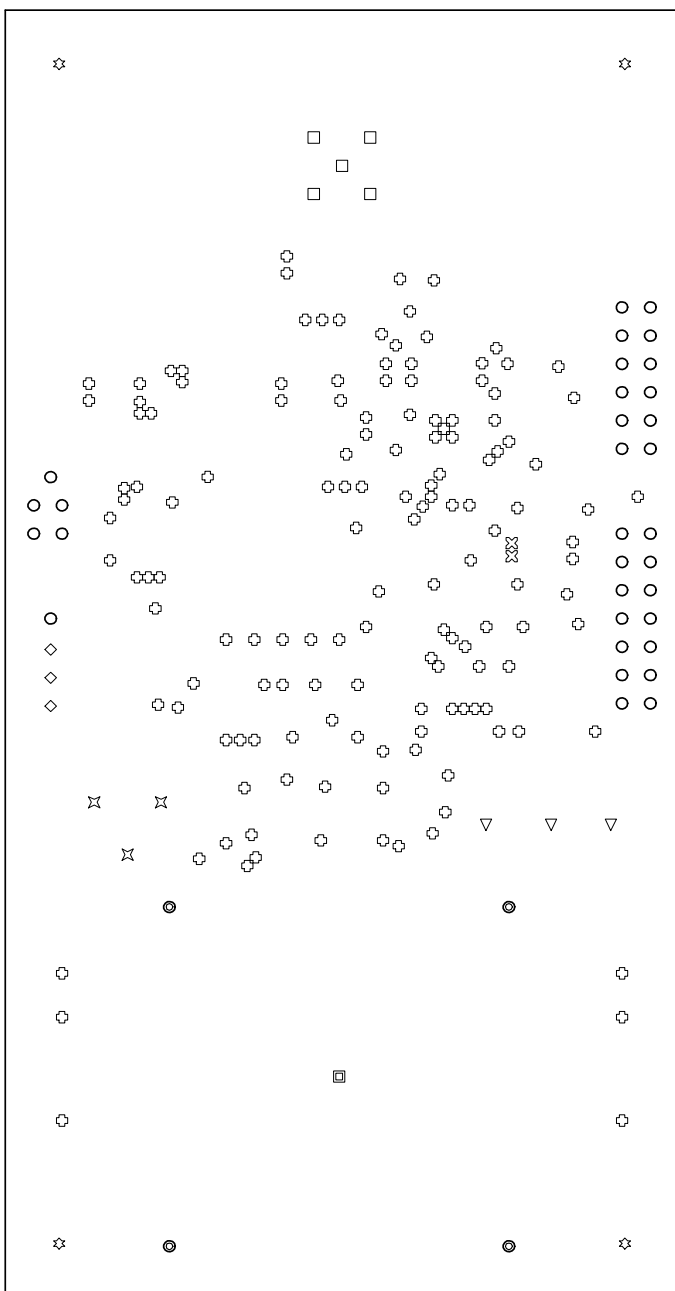
REV: B

DATE: 8-Jan-2008

FILE NAME: CC1101 Rx.PCB

LAYER: Bottom Solder Mask

GERBER: .GBS



⊙	145	13.5mil	0.3429mm	PTH
⊗	2	20mil	0.508mm	PTH
○	32	40mil	1.016mm	PTH
◇	3	43mil	1.0922mm	PTH
✱	3	61mil	1.5494mm	PTH
□	5	67mil	1.7018mm	PTH
▽	3	93mil	2.3622mm	PTH
⦿	4	100mil	2.54mm	PTH
☆	4	125mil	3.175mm	PTH
▣	1	250mil	6.35mm	PTH
	202	Total		

Drill Drawing.

Texas Instruments

DESIGNER:  
Brian Ashelin  
(507) 536-2901

TITLE:

CC1101 Rx 900Mhz



ENGINEER:  
Mike Burns  
(507) 536-2902

PART NO.:

CC1101 Rx 900Mhz

REV:

B

DATE:

8-Jan-2008

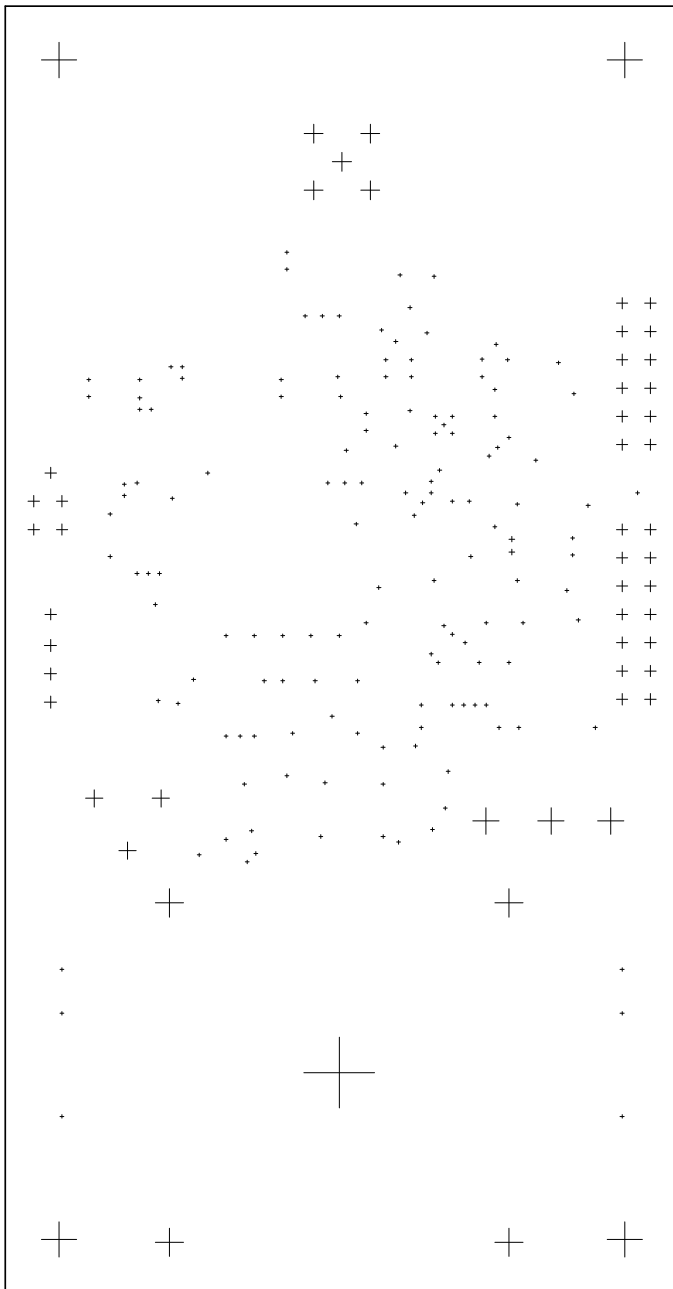
FILE NAME:

CC1101 Rx.PCB

LAYER:

DrillDrawing

GERBER:



Texas Instruments

DESIGNER:  
**Brian Ashelin**  
(507) 536-2901

TITLE:

**CC1101 Rx 900Mhz**



ENGINEER:  
**Mike Burns**  
(507) 536-2902

PART NO.: **CC1101 Rx 900Mhz**

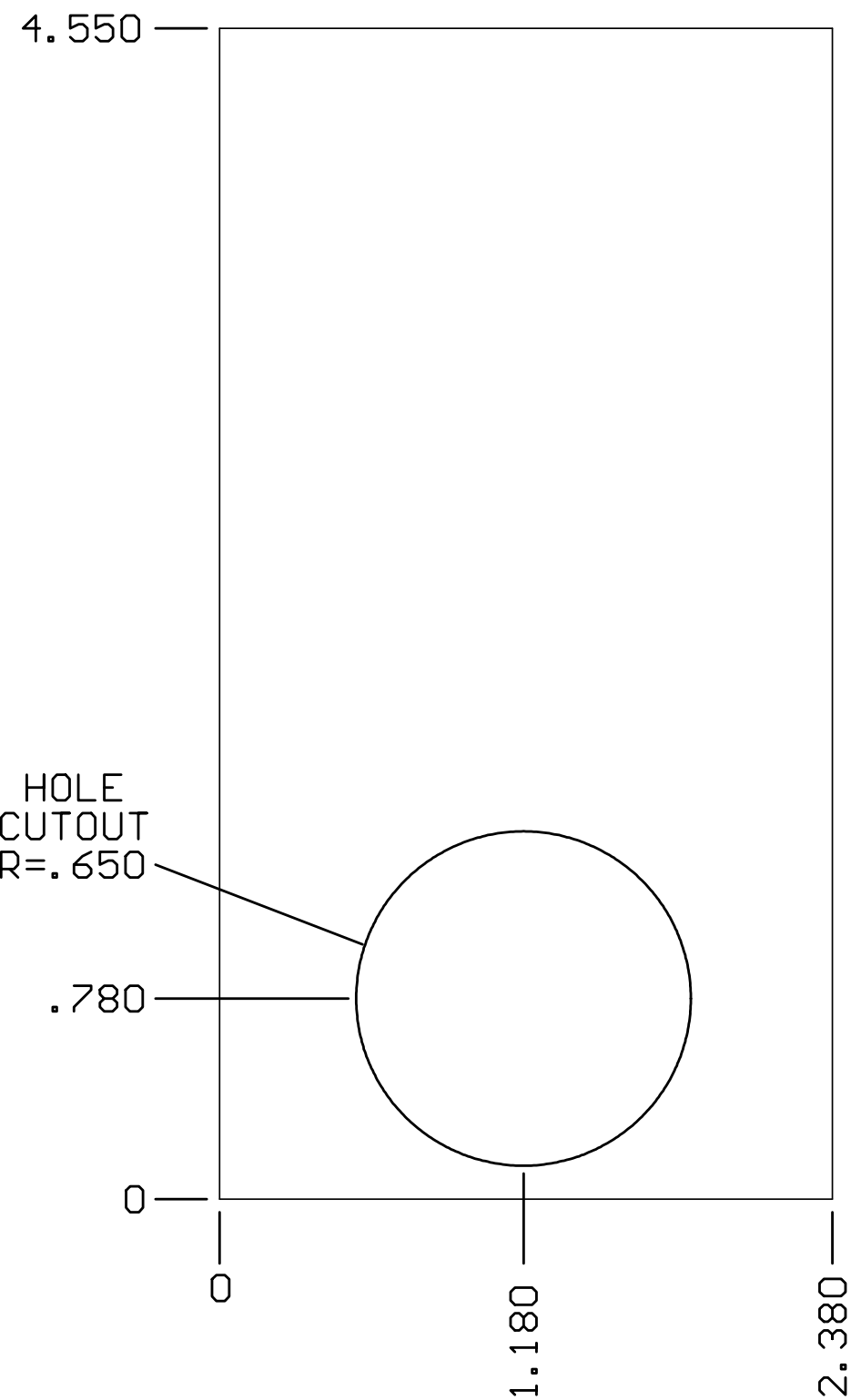
REV: **B**

DATE: **8-Jan-2008**

FILE NAME: **CC1101 Rx.PCB**

LAYER: **DrillGuide**

GERBER:



Texas Instruments

DESIGNER:  
Brian Ashelin  
(507) 536-2901

TITLE:

CC1101 Rx 900Mhz



ENGINEER:  
Mike Burns  
(507) 536-2902

PART NO.: CC1101 Rx 900Mhz

REV: B

DATE: 8-Jan-2008

FILE NAME: CC1101 Rx.PCB

LAYER: Mechanical3

GERBER: